

# GHD Monthly Newsletter

April 2021

The Global Help Desk (GHD) presents this monthly newsletter to introduce ourselves and let you know some recent domestic news, event information, and recent IBS news. All information presented in the newsletter is available online, and to read the full contents you'll need to be connected to the internet. We hope this information is useful to you. Also, visit the website Living in Korea at [www.ibs.re.kr/livinginkorea](http://www.ibs.re.kr/livinginkorea). Hosted by IBS, it has hundreds of pages of contents and photos to help you thrive, not simply survive.

## Living in Korea Highlight

Immigration previously rolled out an online appointment system for roughly half of its [locations](#). As COVID is still a concern, Immigration is requiring visits at all branches to implement the appointment system as of April 1. Remember that your residential address determines which branch office you visit and you need to update Immigration of your new address within two weeks of moving.

## Domestic News



**S. Korea To Expand COVID-19 Vaccinations To More Seniors, Teachers In April**

South Korea is expanding its coronavirus vaccination drive next month to include more elderly people as well as teachers. [Click to read more.](#)



**Baemin Founder Pledges to Donate Half His Wealth**

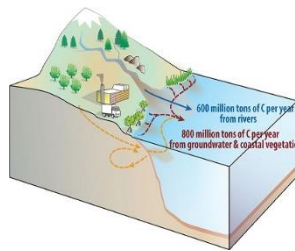
The CEO of South Korea's top food delivery app operator, Woowa Brothers Corporation, said Thursday that he will donate more than half of his wealth. [Click to read more.](#)

## IBS News & Events



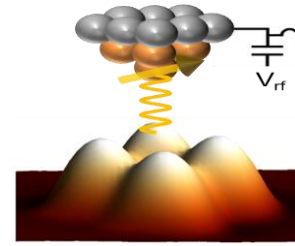
**A New IBS Center in Mathematical Biology Kicks Off**

Professor Jae Kyung Kim of Department of Mathematical Sciences at KAIST is named as the Chief Investigator of the Biomedical Mathematics Group (BIMAG) of the IBS Pioneer Research Center (PRC) for Mathematical and Computational Sciences to investigate sleep mechanisms and treatment strategy for sleep disorders, beginning March 1st. [Read more](#)



**Twice as much carbon flowing from land to ocean than previously thought**

A new study published in the journal Global Biogeochemical Cycles and spearheaded by Dr. Eun Young Kwon, project leader at the IBS Center for Climate Physics South Korea provides new estimates of this elusive component of the global carbon cycle. [Read more](#)



**Tackling quantum many-body states using an atomically precise, bottom-up approach**

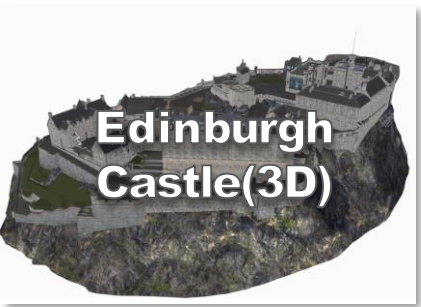
Using the breakthrough ESR-STM technique, researchers from the IBS Center for Quantum Nanoscience collaborated with a US-based team to construct quantum-mechanically coupled artificial spin chains and reveal their quantum many-body states, including the resonating valence bond state. [Read more](#)

## Coronavirus Lockdown Pastime Tips

### Art & Culture



### Free Entertainment



### Outdoor Trails



### Let's Learn Korean!

[Click here](#) for a good intro to the Korean language.

And [click here](#) to find information on the free language classes hosted by IBS and other learning options.



### GHD: Who We Are



ETNERS co., LTD.

Yongtaek Seo

Global Help Desk



7Fl., Uspace II-B 670, Daewangpangyo-ro, Sampyeong-dong, Bundang-gu, Seongnam-si, Gyeonggi-do, Korea